



AMADOR COUNTY OFFICE OF EDUCATION  
AMADOR COUNTY UNIFIED SCHOOL DISTRICT

Torie F. Gibson, Ed.D., Superintendent

(209) 257-5353 | Fax (209) 257-5360 | torie.gibson@acusd.org

217 Rex Avenue, Jackson, CA 95642 | www.amadorcoe.org

---

February 28, 2023

Dear Amador County Families and Community,

All ACUSD schools and district-sponsored activities/events will remain closed tomorrow, Wednesday, March 1st, 2023. We will continue to assess conditions for school on Thursday as we monitor weather reports, snowfall, and road conditions. We are anticipating a freeze and hard freeze through Thursday, March 2, 2023 until 8:00 am that could impact all of Amador County.

The snowfall received since last Thursday has been unprecedented for our county. The snow, along with the freezing temperatures at night, have created dangerous driving conditions for a large portion of our students and staff. We cannot safely bus students to school, nor can we expect them to safely arrive at school by any other means of transportation. We have been in communication with the California Department of Education Emergency Services Team and the Amador County Office of Emergency Services. After extensive research into the weather conditions and power outages, they have recommended school closures for Amador County tomorrow. We know school closures can be extremely inconvenient and frustrating, and we ask for your patience and understanding as we do everything within our power to keep our students, families and staff safe. This, as always, is our number one priority.

At the time of writing this message, approximately 5,000 to 10,000 people in our county are without power. When power outages are this widespread, we cannot safely have students or staff at school, nor can we guarantee that we are properly staffed to ensure a safe learning environment for students.

For additional context, there are two required emergency response/snow days built into our current school calendar. When those days are exhausted due to inclement weather, power outages, or other emergencies, the district files a waiver with the State. If granted, the waiver allows the district to not require school make up days for students. Due to the extreme nature of our current weather conditions, we anticipate the State will grant our waivers.

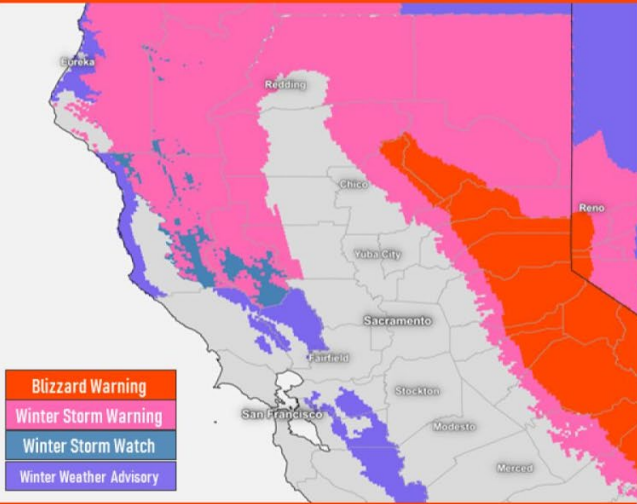
Thank you, and please stay warm and safe while we wait for these storms to pass and get back to normal routines.

Sincerely,

A handwritten signature in blue ink that reads "Torie Gibson".

Torie F. Gibson, Ed.D.  
Superintendent, ACOE & ACUSD

# Blizzard Conditions



- Blizzard Warning
- Winter Storm Warning
- Winter Storm Watch
- Winter Weather Advisory

## Timing

- Blizzard Warning: Until 4 AM March 1, 2023
- Winter Storm Warning: Until 4 AM March 1, 2023

## Forecast

- 2-5 feet above 3000 feet
- 6-12", with local amounts up to 2 feet for 2000-3000 feet
- Wind gusts up to 50 mph, locally to 70 mph over ridgetops

## Precautions

- ✓ Near to impossible travel with white out conditions
- ✓ Excessive travel delays & road closures likely
- ✓ Chain controls
- ✓ Downed tree limbs from heavy snow & gusty winds
- ✓ **Travel is highly discouraged**



National Weather Service - Sacramento, CA  
 weather.gov/sto  
 Updated: Tuesday, February 28, 2023

# Storm Timeline

February 28 - March 6, 2023



**Legend**

- Extreme Impact
- Major Impact
- Moderate Impact
- Minor Impact
- No Impact

### Today

Heavy mountain & foothill snow. Near to impossible travel with whiteout conditions & near-zero visibility. Snow levels 1000-2000 ft, locally down to 500 feet in Shasta County. Moderate to heavy Valley showers. Gusty southerly winds. Isolated t-storms.

### Wednesday

Cold morning lows. Lingering showers, mainly in the foothills and mountains along and south of I-80. Major travel impacts likely to continue in the morning. Locally breezy north to east winds.

### Thursday - Friday

Cold morning lows; coldest Thursday morning. Dry conditions.

### Saturday - Early Next Week

Another winter storm. Moderate to heavy mountain & upper foothill snow. Snow levels 2500 ft to 3500 ft Saturday, lowering to 1500-2500 ft Sunday. Additional Valley rain. Breezy southerly winds.

# Below Freezing

**Timing**

- 2 AM - 8 AM Wednesday, March 1, 2023
- 2 AM - 8 AM Thursday, March 2, 2023

**Forecast**

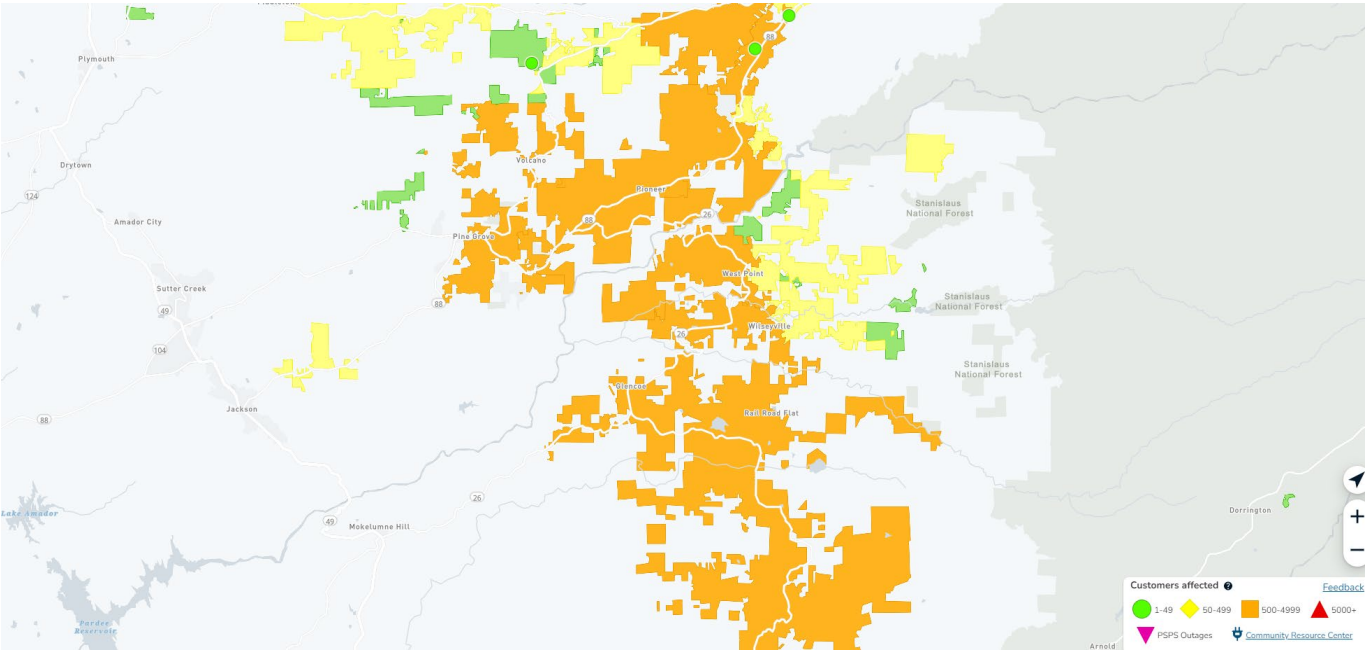
- Overnight temperatures of 20° to 32° in the warning area
- Mountains in the teens and single digits

**Precautions**

- Freezing temperatures can damage or kill crops & plants that are sensitive to cold.
- Consider wrapping external pipes which may be vulnerable to freezing.
- Please check on the elderly and make sure your animals have a warm shelter.

**National Weather Service - Sacramento, CA**  
[weather.gov/sto](http://weather.gov/sto)  
 Updated: Tuesday, February 28, 2023

Current PG&E outage map for our area:



Current PG&E outage map for California:

